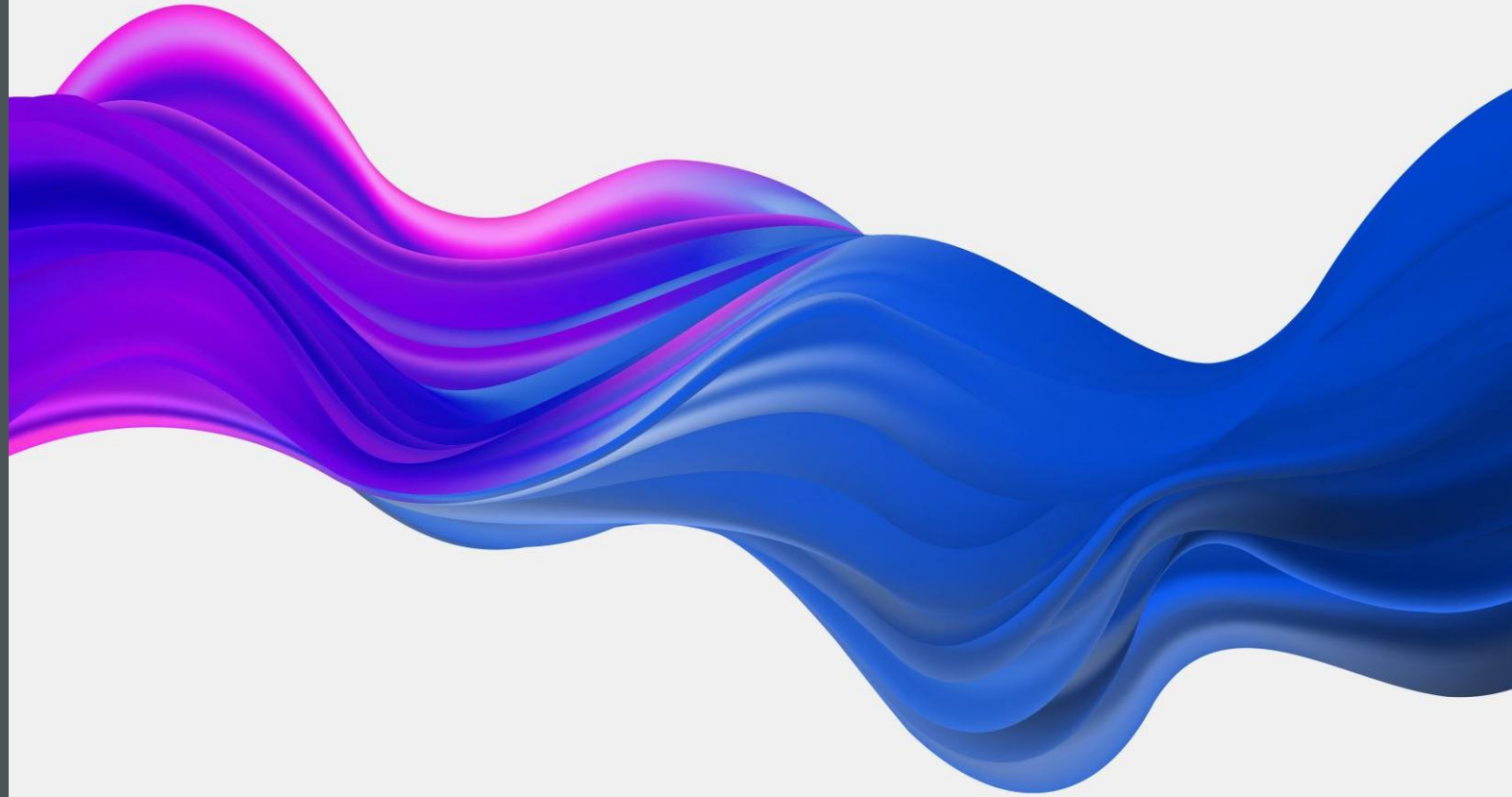


TOMORROW'S
REALITY
FROM
TODAY'S
IDEAS

*The Central Council
of the
Tlingit & Haida Indian
Tribes of Alaska*



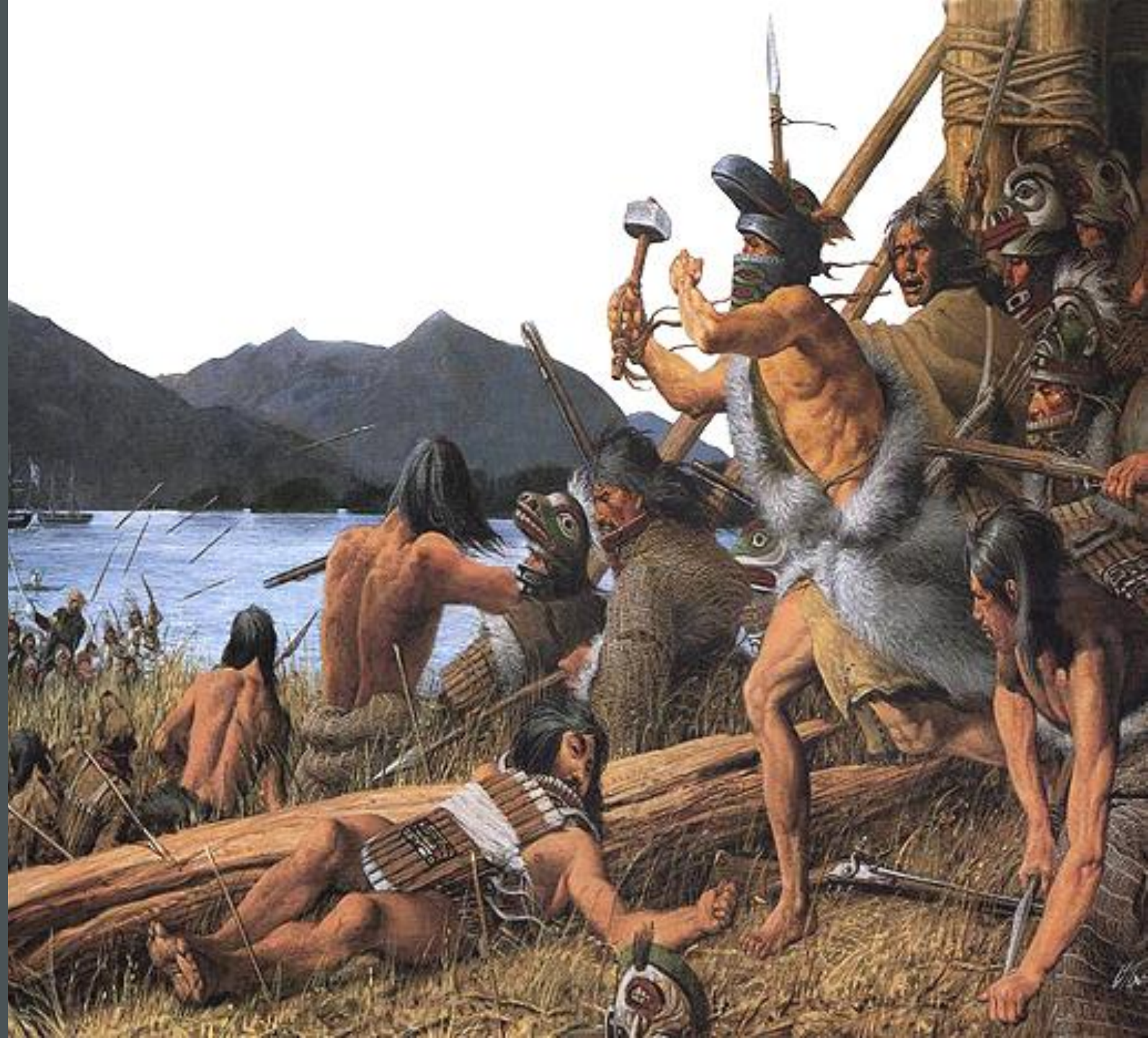


ABUNDANCE

*From time immemorial
our ancestors left for us
an abundance - for they
properly managed every
resource.*

CHANGE

Historically Colonization, Systemic Racism, Property Theft, Industrial Greed, and Resource Mis-management have created injustices that our people have fought to overcome.





RESILIENCE

*As known from our Histories
Our people traditionally
challenge injustice.
And we succeed.*

CHALLENGES TO MEET

*As unremitting stewards of the
Air, Land, and Sea
we face yet another challenge
A Rapidly Changing Climate.*



A WARMER PLANET

*Global
temperatures have
increased and are
forecast to
continue rising.*

T&H Climate Change Adaptation Plan p.4-6



Photo: M. T. Millett, NSIDC Glacier





THE SEA IS SICK

Ocean temperatures are increasing causing the poisoning of our food - Ocean chemistry balances are in fluctuation causing harm to all marine life.

COMPLEX INTERACTIONS

Precipitation, much like temperatures, is increasing.

A “Less Snow - More Rain” regime will cause many negative effects on many resources like Salmon and Cedar.



Central Council of the Tlingit & Haida Indian Tribes of Alaska



CLIMATE CHANGE ADAPTATION PLAN

FIRST STEPS

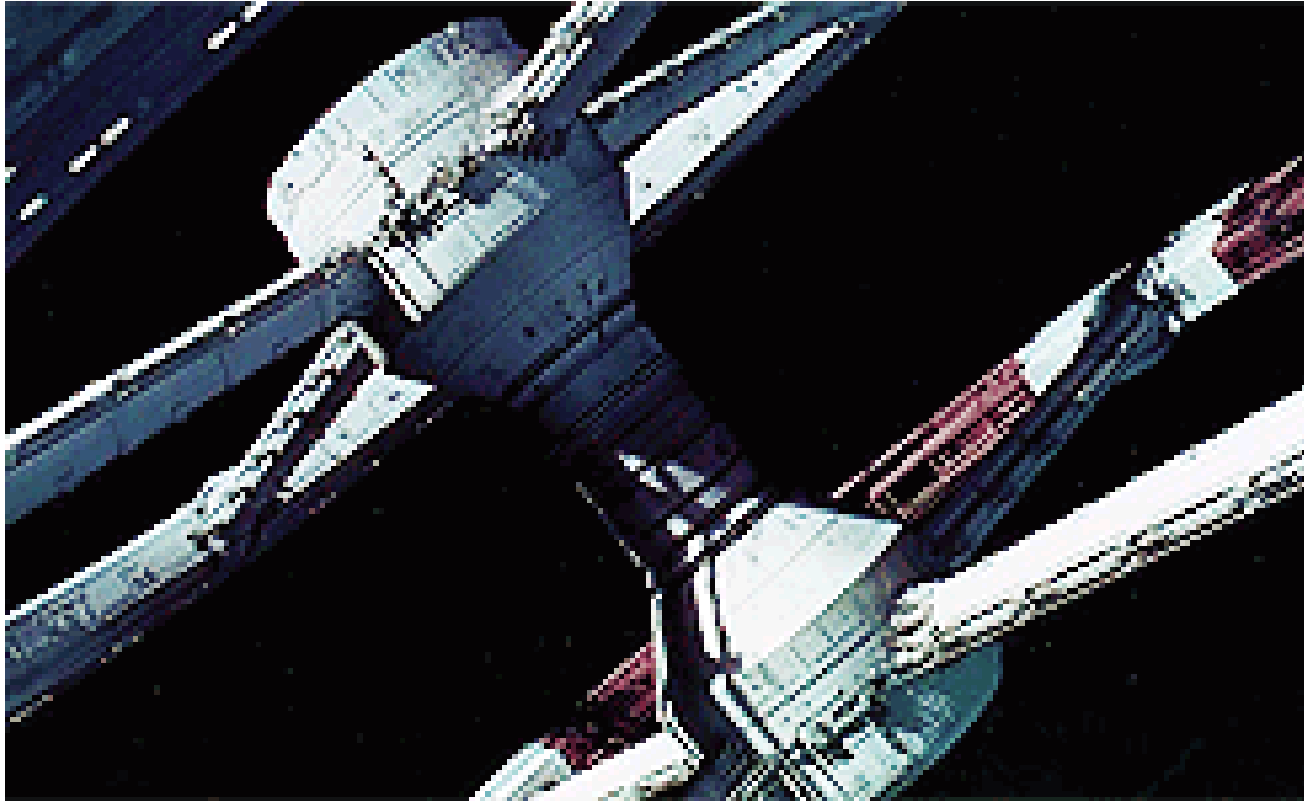
Was the creation and approval of the Tlingit & Haida Climate Change Adaptation Plan – Which provides a “groundwork” for adaptation, mitigation, and opportunity strategies to combat the changing climate.

ADDITIONS TO SAFEGUARDING

The Indigenous Guardians program promotes tribes exercising their inherent right to manage ancestral territories safeguarding the health of ecosystems and promoting the self-determination and well-being of Native people.



PLAN THE FUTURE



*With climate change in mind - What in our **Culture** and in our **Economies** will be most impacted?*

What priorities do we need to take Today to ensure the continuity of our People and our Place in the face of a rapidly changing climate?